

# INTERMEDIATE CHESS TRAINING

FOR PLAYERS WHO KNOW THE BASICS AND ARE READY TO TAKE THEIR GAME TO THE NEXT LEVEL

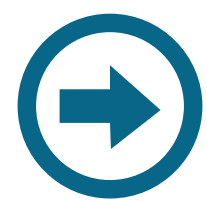
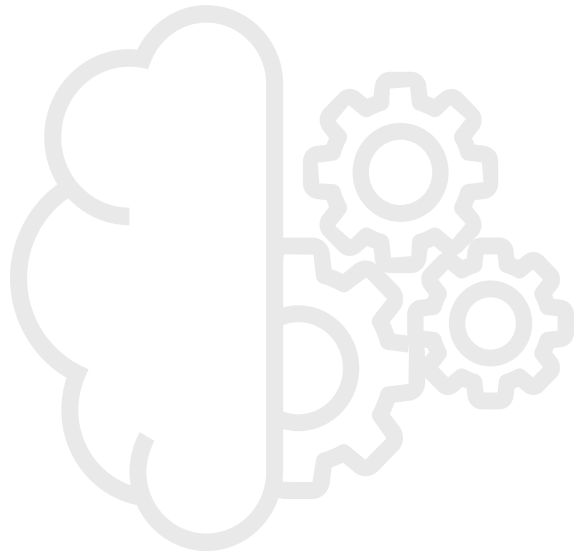
NAME: \_\_\_\_\_



## SKILL TRACKER

GO TO [LICHESS.ORG](https://lichess.org) AND CLICK "LEARN" THEN "PRACTICE"

 10-15 min  
Per Session



<b>PIECE CHECKMATES I</b>	<b>CHECKMATE PATTERNS I</b>	<b>CHECKMATE PATTERNS II</b>	<b>PINS</b>	<b>FORKS</b>	<b>SKEWERS</b>	<b>DISCOVERED ATTACKS</b>	<b>OVERLOADED PIECES</b>	<b>DOUBLE CHECK</b>
<input type="radio"/>	<input type="radio"/>	<input type="radio"/>	<input type="radio"/>	<input type="radio"/>	<input type="radio"/>	<input type="radio"/>	<input type="radio"/>	<input type="radio"/>



## GAME TRACKER

GO TO [LICHESS.ORG](https://lichess.org)

 20-30 min  
Per Session

PLAY AND REVIEW 15 RATED RAPID OR CLASSICAL LICHESS GAMES

W/L/D	<input type="text"/>	<input type="text"/>	<input type="text"/>	<input type="text"/>	<input type="text"/>	<input type="text"/>	<input type="text"/>	<input type="text"/>	<input type="text"/>	<input type="text"/>	<input type="text"/>	<input type="text"/>	<input type="text"/>	<input type="text"/>	<input type="text"/>	<input type="text"/>	<input type="text"/>
NO. OF INNACURACIES	<input type="text"/>	<input type="text"/>	<input type="text"/>	<input type="text"/>	<input type="text"/>	<input type="text"/>	<input type="text"/>	<input type="text"/>	<input type="text"/>	<input type="text"/>	<input type="text"/>	<input type="text"/>	<input type="text"/>	<input type="text"/>	<input type="text"/>	<input type="text"/>	<input type="text"/>
NO. OF MISTAKES	<input type="text"/>	<input type="text"/>	<input type="text"/>	<input type="text"/>	<input type="text"/>	<input type="text"/>	<input type="text"/>	<input type="text"/>	<input type="text"/>	<input type="text"/>	<input type="text"/>	<input type="text"/>	<input type="text"/>	<input type="text"/>	<input type="text"/>	<input type="text"/>	<input type="text"/>
NO. OF BLUNDERS	<input type="text"/>	<input type="text"/>	<input type="text"/>	<input type="text"/>	<input type="text"/>	<input type="text"/>	<input type="text"/>	<input type="text"/>	<input type="text"/>	<input type="text"/>	<input type="text"/>	<input type="text"/>	<input type="text"/>	<input type="text"/>	<input type="text"/>	<input type="text"/>	<input type="text"/>

## TACTICS TRACKER

GO TO [LICHESS.ORG/TRAINING/](https://lichess.org/training/)

NUMBER OF TACTICS/PUZZLES  
COMPLETED AT START OF  
TRACKING

STARTING TACTICS RATING

FINAL RATING

For each tactic, take your time trying to visualize the solution without moving the pieces. Don't move until you see the solution. This method helps you better prepare for real games when you must "see" the best move before you make it.

				<b>150</b>
			<b>100</b>	<input type="text"/>
		<b>60</b>	<input type="text"/>	<input type="text"/>
	<b>30</b>	<input type="text"/>	<input type="text"/>	<input type="text"/>
<b>10</b>	<input type="text"/>	<input type="text"/>	<input type="text"/>	<input type="text"/>



Fill in a block for every 10 tactics you complete successfully.

## COORDINATES TRAINING

GO TO [LICHESS.ORG/TRAINING/COORDINATE](https://lichess.org/training/coordinate)

For each color, reach an average score of

**20**

FINAL SCORE  
AS WHITE

FINAL SCORE  
AS BLACK